

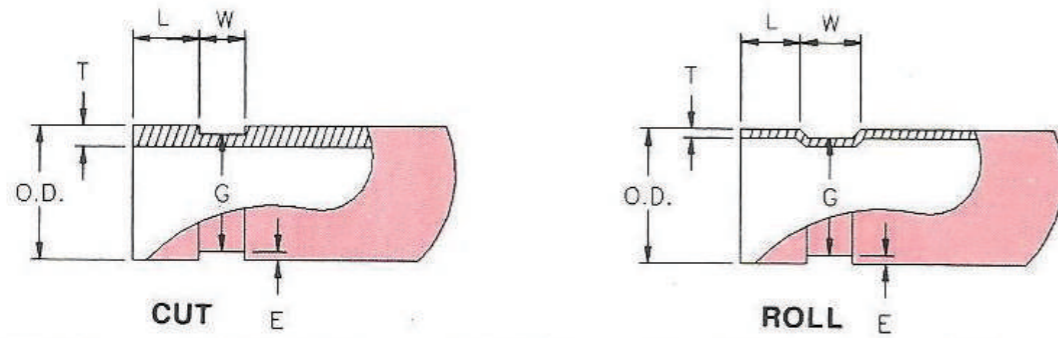
ISO
9001



LISTED



APPROVED



GROOVED END PIPE SPECIFICATION

Pipe Size Inches mm	Pipe O.D. Inches mm	Min. Thick Cut Inches/mm	Min. Thick Roll Inches/mm	L Width ±0.031 Inches ±0.8mm	G Inches mm	W Width ±0.031 Inches ±0.8mm	E Inches mm(Ref)	Max. Allow Flare Inches/mm
1	1.315	0.140	0.065	0.625	1.190-.015	0.3125	0.063	1.365
25	33.4	3.556	1.651	15.875	30.226-.381	7.937	1.600	34.67
1¼	1.660	0.140	0.065	0.625	1.535-.015	0.3125	0.063	1.740
32	42.4	3.556	1.651	15.875	38.989-.381	7.937	1.600	44.20
1½	1.900	0.145	0.065	0.625	1.775-.015	0.3125	0.063	1.980
40	48.3	3.683	1.651	15.875	45.085-.381	7.937	1.600	50.29
2	2.375	0.154	0.065	0.625	2.250-.015	0.3125	0.063	2.455
50	60.3	3.912	1.651	15.875	57.150-.381	7.937	1.600	62.38
2½	2.875	0.187	0.083	0.625	2.720-.018	0.3125	0.078	2.955
65	73	4.750	2.108	15.875	69.089-.457	7.937	1.981	75.06
2½	3.000	0.188	0.083	0.625	2.845-.018	0.3125	0.078	3.080
65	76.2	4.775	2.108	15.875	72.263-.457	7.937	1.981	78.23
3	3.500	0.188	0.083	0.625	3.344-.018	0.3125	0.078	3.580
80	88.9	4.775	2.108	15.875	84.938-.457	7.937	1.981	90.93
4	4.500	0.203	0.083	0.625	4.334-.020	0.375	0.083	4.580
100	114.3	5.156	2.108	15.875	110.084-.508	9.525	2.108	116.33
5	5.563	0.203	0.109	0.625	5.395-.022	0.375	0.084	5.643
125	141.3	5.156	2.769	15.875	137.033-.559	9.525	2.134	143.33
5	5.500	0.203	0.109	0.625	5.332-.022	0.375	0.084	5.579
125	139.8	5.156	2.769	15.875	135.433-.559	9.525	2.134	141.70
6	6.625	0.219	0.109	0.625	6.330-.022	0.375	0.085	6.725
150	168.3	5.563	2.769	15.875	160.782-.559	9.525	2.159	170.82
6	6.500	0.219	0.109	0.625	6.455-.022	0.375	0.085	6.600
150	165	5.563	2.769	15.875	163.957-.559	9.525	2.159	167.64
8	8.625	0.238	0.109	0.750	8.441-.025	0.437	0.092	8.745
200	219.1	6.045	2.769	19.050	214.401-.635	11.10	2.337	222.12
8	8.515	0.238	0.109	0.750	8.455-.025	0.437	0.092	8.635
200	216.3	6.045	2.769	19.050	211.734-.635	11.10	2.337	219.33
10	10.75	0.250	0.134	0.750	10.562-.027	0.500	0.094	10.875
250	273	6.350	3.404	19.050	268.275-.686	12.70	2.388	276.23
10	10.525	0.250	0.134	0.750	10.337-.027	0.500	0.094	10.650
250	267.4	6.350	3.404	19.050	262.675-.686	12.70	2.388	270.51
12	12.75	0.279	0.156	0.750	12.531-.030	0.500	0.109	12.875
300	323.9	7.087	3.962	19.050	318.287-.762	12.70	2.769	327.03
12	12.535	0.279	0.156	0.750	12.318-.030	0.500	0.109	12.660
300	318.5	7.087	3.962	19.050	312.887-.762	12.70	2.769	321.56

**GROOVED PIPE
JOINTING SYSTEM**



GENTLER INDUSTRIAL CO., LTD.

1F., No. 986, Sec. 5, Zhongxiao E. Rd., Nangang Dist.,
Taipei City 115 Taiwan (R.O.C.)

Tel:(02)26519252-3 Fax:886-2-27863294

E-mail:gtr542ht@ms18.hinet.net



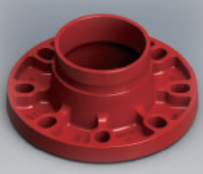




http://www.ducco.com.tw

CONTENTS

1	Content & Ductile iron Grooved Coupling and Fittings	8	612SR/612SRF
2	Terms and Conditions	9	618SR & 618H/618EH
3	402/402R & 4020	10	623/623SR & 624/624SR
4	402H/402RH	11	426
5	602/611/616 Series	12	413A/413AC
6	604/605	13-14	413B/413BC
7	612/612F & 612SR/612SRF		

DUCTILE IRON GROOVED COUPLING AND FITTINGS

FINISH: PAINTED/EPOXY/GALV

			
402	402R	4020	426
			
602SR	604/604SR	611SR	612/612SR
			
612F/612SRF	616	618	623/623SR
			
624/624SR	413A	413B	Lubricant

Terms and Conditions

Gentler Industrial Co., Ltd. was established in August 1973 with the initial products of gray iron, malleable iron pipe fittings and parts. More than 80 percent of our products were exported and a small portion of domestic sales. Integrity and pragmatism lead us through secondary oil crisis and the Asian financial crisis during the time.

Taiwan's economy was thriving since the 1980s. Labor costs continually increased as well as the awareness of environmental consciousness that traditional industries were facing a transition pressure. While pursuing high value and trying to reduce the impact to the environmental pollution, we developed ductile iron grooved fittings, the item has been used for many years in Europe and the United States despite Taiwan market was still unfamiliar of this at that time. The trial production only supplied the Australian market till the end of 1985. UL also established a liaison office in the same year, and our developments and products were mature to apply the UL and FM certification. In April 1986, "DUCCO" was the first in Taiwan to obtain the UL and FM certification. We were also certified ISO 9002 in 1998. In the affirmation of the international institutes, using our products is just as ensuring your decision-making.

We've been kept developing new products and continuing quality controls in the past three decades. Not only gaining reputations in our exporting business but we also earn good one in domestic market in Taiwan, such as Taipei City Government Building, the Taiwan Railway underground project, Kaohsiung East Timor disabilities 85th floor, Pacific SOGO, the Yonghe T elecom building, and Chiang Kai-shek Airport underground car parking and other buildings in use.

We started our development and production in Stainless Steel Groove Fittings and Couplings ten years ago, and also acquired the certifications of Australian WATERMARK and UL water for drink water component. Currently, we are selling the stainless steel items domestically and in Europe, USA and Australia.

Because of its natures of anti-corrupting and anti-rusting, s.steel grooved fittings and couplings are wildly used on the portable water/drinking water system; it can also be suitable for desalination wastewater treatment system which provide our valuable customers a better choice.

Gentler Industrial Co., Ltd has acquired international certification on more than 250 kinds of products in early year 2000s. **DUCCO** brand are widely used in the fire control system, hot and cold water supply, drainage, sewage treatment, pits, tunnels and other purposes. Foreign customers have quite positive responses to our products and to our services. As a future prospect, we will be continuing and leveling up our services, products and qualities.

CERTIFICATE

This is to certify that

Gentler Industrial Co., Ltd.
No. 101, Lane 279, Ren'Al Road, Daliao District
Kaohsiung City
Taiwan (R.O.C.)

has implemented and maintains a **Quality Management System**.

Scope:
The design and manufacture of rubber gasketed grooved couplings, and groove fittings in ductile iron and stainless steel.

Through an audit, documented in a report, it was verified that the management system fulfills the requirements of the following standard:

ISO 9001 : 2015

Certificate registration no.	20001112 QM15
Date of original certification	1998-07-28
Valid from	2018-09-05
Valid until	2021-09-04
Date of certification	2018-09-05

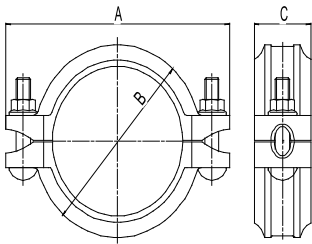
DQS Inc.
Brad McGuire
Brad McGuire
Managing Director

Accredited Body: DQS Inc., 1130 West Lake Cook Road, Suite 340, Buffalo Grove, IL 60089 USA
Administrative Office: DQS Taiwan Inc., 8F, 23, Yuan Hsueh West Road, Feng Yuan Dist., Taichung City, Taiwan 420



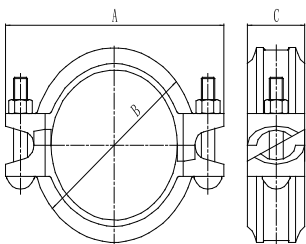
402/402R

Flexible Coupling/
Rigid Coupling



4020

Angle Pad Coupling



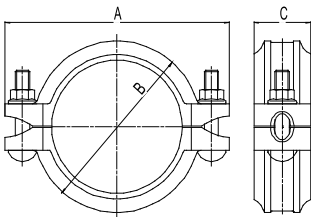
Nominal Size mm/in	Pipe O.D mm/in	Working Pressure MPa/psi	Dimensions mm/in			Bolt/Nut
			A	B	C	
25 1	33.7 1.327	2.07 300	98	58	45	2-3/8**50
32 1¼	42.4 1.66	2.07 300	106	68	45	2-3/8**50
40 1½	48.3 1.9	2.07 300	112	73	45	2-3/8**50
50 2	60.3 2.375	2.07 300	128	86	45	2-3/8**55
65 2½	73 2.875	2.07 300	138	96	45	2-3/8**55
65 2½	76.1 3	2.07 300	139	99	45	2-3/8**55
80 3	88.9 3.5	2.07 300	158	112	45	2-3/8**60
100 4	114.3 4.5	2.07 300	192	143	50	2-1/2**70
125 5	139.7 5.5	2.07 300	223	169	50	2-1/2**75
125 5	141.3 5.563	2.07 300	223	169	50	2-1/2**75
150 6	165.1 6.5	2.07 300	252	198	50	2-1/2**75
150 6	168.3 6.625	2.07 300	252	200	50	2-1/2**75
200 8	216.3 8.516	2.07 300	402:326 402R:322	252	60	2-5/8**90
200 8	219.1 8.625	2.07 300	322	254	58	2-5/8**90
250 10	267.4 10.528	2.07 300	384	309	62	2-3/4**100
250 10	273 10.75	2.07 300	402:388 402R:390	314	62	2-3/4**110
300 12	318.5 12.539	2.07 300	440	362	62	2-3/4**110
300 12	323.9 12.75	2.07 300	443	365	62	2-3/4**110

Nominal Size mm/in	Pipe O.D mm/in	Working Pressure MPa/psi	Dimensions mm/in			Bolt/Nut
			A	B	C	
25 1	33.7 1.327	2.07 300	98	58	45	2-3/8**50
32 1¼	42.4 1.66	2.07 300	106	68	45	2-3/8**50
40 1½	48.3 1.9	2.07 300	112	73	45	2-3/8**50
50 2	60.3 2.375	2.07 300	128	86	45	2-3/8**55
65 2½	73 2.875	2.07 300	138	96	45	2-3/8**55
65 2½	76.1 3	2.07 300	139	99	45	2-3/8**55
80 3	88.9 3.5	2.07 300	158	112	45	2-3/8**60
100 4	114.3 4.5	2.07 300	192	143	50	2-1/2**70
125 5	139.7 5.5	2.07 300	223	169	50	2-1/2**75
125 5	141.3 5.563	2.07 300	223	169	50	2-1/2**75
150 6	165.1 6.5	2.07 300	252	198	50	2-1/2**75
150 6	168.3 6.625	2.07 300	252	200	50	2-1/2**75
200 8	216.3 8.516	2.07 300	322	252	60	2-5/8**90
200 8	219.1 8.625	2.07 300	336	259	60	2-5/8**90
250 10	267.4 10.528	2.07 300	384	309	62	2-3/4**110
250 10	273 10.75	2.07 300	388	314	62	2-3/4**110
300 12	318.5 12.539	2.07 300	440	362	62	2-3/4**130
300 12	323.9 12.75	2.07 300	452	370	64	2-3/4**130



402H/402RH

High Pressure Flexible
Coupling/
High Pressure Rigid
Coupling

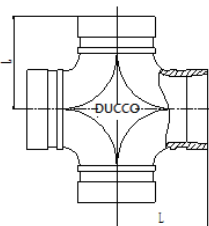
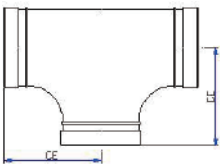
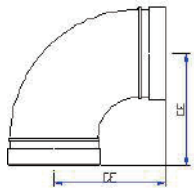


Nominal Size mm/in	Pipe O.D mm/in	Working Pressure MPa/psi	Dimensions mm/in			Bolt/Nut
			A	B	C	
25 1	33.7 1.327	3.45 500	98	58	45	2-3/8"*50
32 1¼	42.4 1.66	3.45 500	106	68	45	2-3/8"*50
40 1½	48.3 1.9	3.45 500	112	73	45	2-3/8"*50
50 2	60.3 2.375	3.45 500	128	90	45	2-3/8"*55
65 2½	73 2.875	3.45 500	138	100	45	2-3/8"*55
65 2½	76.1 3	3.45 500	141	104	45	2-3/8"*55
80 3	88.9 3.5	3.45 500	158	118	45	2-3/8"*60
100 4	114.3 4.5	3.45 500	192	148	50	2-1/2"*75
125 5	139.7 5.5	3.45 500	223	174	50	2-1/2"*75
125 5	141.3 5.563	3.45 500	223	175	50	2-1/2"*75
150 6	165.1 6.5	3.45 500	264	204	50	2-5/8"*90
150 6	168.3 6.625	3.45 500	266	206	50	2-5/8"*90
200 8	216.3 8.516	3.45 500	322	402H:266 402RH:260	60	2-5/8"*90
200 8	219.1 8.625	3.45 500	326	265	60	2-5/8"*90
250 10	267.4 10.528	3.45 500	384	309	62	2-3/4"*110
250 10	273 10.75	3.45 500	388	314	62	2-3/4"*110
300 12	318.5 12.539	3.45 500	440	362	62	2-3/4"*130
300 12	323.9 12.75	3.45 500	452	370	64	2-3/4"*130



602/611/616 Series

90° Elbow / Tee/Cross

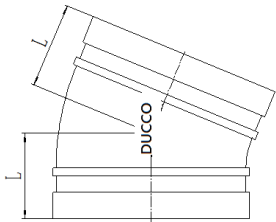
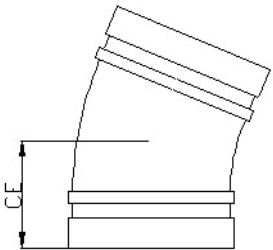


Nominal Size mm/in	Pipe O.D mm/in	Working Pressure MPa/psi	Dimensions mm/in		
			C-E		
			602SSR 611SSR 616SSR	602SR 611SR 616SR	602 611 616
25 1	33.7 1.327	2.07 300		57	57
32 1¼	42.4 1.66	2.07 300		60	70
40 1½	48.3 1.9	2.07 300		60	70
50 2	60.3 2.375	2.07 300	65(For 602) 70(For 611/616)	70	83
65 2½	73 2.875	2.07 300		76	95
65 2½	76.1 3	2.07 300	76	76	95
80 3	88.9 3.5	2.07 300	80	86	108
100 4	114.3 4.5	2.07 300	96	102	127
125 5	139.7 5.5	2.07 300	110	122	140
125 5	141.3 5.563	2.07 300		122	140
150 6	165.1 6.5	2.07 300	122	140	165
150 6	168.3 6.625	2.07 300	125	140	165
200 8	216.3 8.516	2.07 300		175	197
200 8	219.1 8.625	2.07 300	155	175	197
250 10	267.4 10.528	2.07 300		215	229
250 10	273 10.75	2.07 300	190	215	229
300 12	318.5 12.539	2.07 300		245	254
300 12	323.9 12.75	2.07 300	220	245	254



604/605

45° Elbow

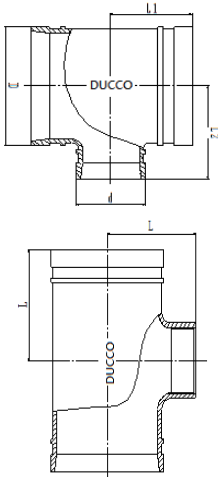


Nominal Size mm/in	Pipe O.D mm/in	Working Pressure MPa/psi	Dimensions mm/in		
			C-E		
			604SR	604	605
25 1	33.7 1.327	2.07 300		45	40
32 1¼	42.4 1.66	2.07 300		45	45
40 1½	48.3 1.9	2.07 300		45	45
50 2	60.3 2.375	2.07 300		50	45
65 2½	73 2.875	2.07 300	55	62	48
65 2½	76.1 3	2.07 300	55	62	48
80 3	88.9 3.5	2.07 300	55	64	50
100 4	114.3 4.5	2.07 300	60	76	73
125 5	139.7 5.5	2.07 300	70	83	55
125 5	141.3 5.563	2.07 300	70	83	60
150 6	165.1 6.5	2.07 300	70	89	60
150 6	168.3 6.625	2.07 300	70	89	79
200 8	216.3 8.516	2.07 300	90	108	80
200 8	219.1 8.625	2.07 300	90	108	80
250 10	267.4 10.528	2.07 300		121	110
250 10	273 10.75	2.07 300	110	121	110
300 12	318.5 12.539	2.07 300		133	124
300 12	323.9 12.75	2.07 300	120	133	124



612/612F

Reducing Tee Grooved/
Thread



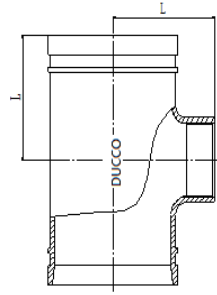
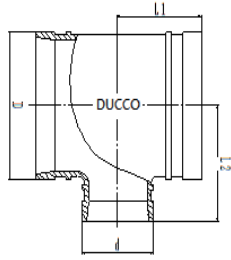
Nominal Size mm/in	Pipe O.D mm/in	Working Pressure MPa/psi	Dimensions mm/in	
			L	
32~50*25 1¼~2*1	42.4~60.3*33.7 1.66~2.375*1.327	2.07 300	70	
40~50*32 1½~2*1¼	48.3~60.3*42.4 1.9~2.37*1.66	2.07 300	70	
60*40 2*1½	60.3*48.3 2.375*1.9	2.07 300	70	
65*25~50 2½*1~2	73/76*33.7~60.3 2.875/3*1.327~2.375	2.07 300	76	
80*25~65 3*1~2½	88.9*33.7~73/76 3.5*1.327~2.875~3	2.07 300	86	
100*25~80 4*1~3	114.3*33.7~88.9 4.5*1.327~3.5	2.07 300	102	
125*25 5*1~4	139.7/141.3*33.7~114.3 5.5/5.563*1.327~4.5	2.07 300	122	
150*25~125 6*1~5	165.1/168.3*33.7~139.7/141.3 6.5/6.625*1.327~5.5/5.563	2.07 300	140	
200*50~150 8*2~6	216/219.1*60.3~165/168 8.516/8.625*2.375~6.25/6.5	2.07 300	175	
250*100~200 10*4~8	267/273*114.3~216/219 10.528/10.75*4.252~8.516/8.625	2.07 300	229	
300*100~250 12*4~10	318/323.9*114.3~10.528/10.75 12.539/12.75*4.5~10.528/10.75	2.07 300	254	

612SR/612SRF

Short Radius Reducing
Tee Grooved/
Thread



Nominal Size mm/in	Pipe O.D mm/in	Working Pressure MPa/psi	Dimensions mm/in	
			L1	L2
80*25 3*1	88.9*33.7 3.5*1.327	2.07 300	65/70	86
80*32 3*1¼	88.9*42.4 3.5*1.66	2.07 300	70/75	86
80*40 3*1½	88.9*48.3 3.5*1.9	2.07 300	70/75	86
80*50 3*2	88.9*60.3 3.5*2.375	2.07 300	75/85	86
80*65 3*2½	88.9*76.1 3.5*3	2.07 300	75	75
100*25 4*1	114.3*3.7 4.5*1.327	2.07 300	70	102
100*32 4*1¼	114.3*42.4 4.5*1.66	2.07 300	70	102
100*40 4*1½	114.3*48.3 4.5*1.9	2.07 300	75	102
100*50 4*2	114.3*60.3 4.5*2.375	2.07 300	85	102
100*65 4*2½	114.3*73 4.5*2.875	2.07 300	85	102
100*65 4*2½	114.3*76.1 4.5*3	2.07 300	80	95
100*80 4*3	114.3*88.9 4.5*3.5	2.07 300	85	95
125*25 5*1	139.7/141.3*33.7 5.5/5.563*1.327	2.07 300	70	122



Nominal Size mm/in	Pipe O.D mm/in	Working Pressure MPa/psi	Dimensions mm/in	
			L1	L2
125*32 5*1¼	139.7141.3*42.4 5.5/5.563*1.66	2.07 300	70	115
125*40 5*1½	139.7141.3*48.3 5.5*1.9	2.07 300	75	122
125*50 5*2	139.7141.3*60.3 5.5/5.563*2.375	2.07 300	85	122
125*65 5*2½	139.7141.3*73/76 5.5/5.563*2.875/3	2.07 300	85	122
125*80 5*3	139.7141.3*88.9 5.5/5.563*3.5	2.07 300	100	122
125*100 5*4	139.7*114.3 5.5*4.5	2.07 300	95/100	122
125*100 5*4	141.3*114.3 5.563*4.5	2.07 300	110	122
150*25 6*1	165.1*33.7 6.5*1.327	2.07 300	70	140
150*32 6*1¼	165.1*42.4 6.5*1.66	2.07 300	70	130
150*40 6*1½	165.1*48.3 6.5*1.9	2.07 300	75	140
150*50 6*2	165.1*60.3 6.5*2.375	2.07 300	85	140
150*65 6*2½	165.1*73 6.5*2.875	2.07 300	85	140
150*65 6*2½	165.1*76.1 6.5*3	2.07 300	80	115
150*80 6*3	165.1*88.9 6.5*3.5	2.07 300	100	130
150*100 6*4	165.1*114.3 6.5*4.5	2.07 300	102/110	120
150*125 6*5	165.1*139.7 6.5*5.5	2.07 300	108	125
150*125 6*5	165.1*141.3 6.5*5.563	2.07 300	125	140
150*25 6*1	168.3*33.7 6.625*1.327	2.07 300	70	140
150*32 6*1¼	168.3*42.4 6.625*1.66	2.07 300	75/70	135
150*40 6*1½	168.3*48.3 6.625*1.9	2.07 300	75	135
150*50 6*2	168.3*60.3 6.625*2.375	2.07 300	85	135
150*65 6*2½	168.3*73 6.625*2.875	2.07 300	85	140
150*65 6*2½	168.3*76.1 6.625*3	2.07 300	85/80	135
150*80 6*3	168.3*88.9 6.625*3.5	2.07 300	100	140

Nominal Size mm/in	Pipe O.D mm/in	Working Pressure MPa/psi	Dimensions mm/in	
			L1	L2
150*100 6*4	168.3*108 6.625*4.252	2.07 300	102/110	120
150*100 6*4	168.3*114.3 6.625*4.5	2.07 300	105	120
150*125 6*5	168.3*139.7 6.625*5.5	2.07 300	125	140
150*125 6*5	168.3*141.3 6.625*5.563	2.07 300	125	140
200*32 8*1¼	219.1*42.4 8.625*1.66	2.07 300	75	155
200*40 8*1½	219.1*48.3 8.625*1.9	2.07 300	75	155
200*50 8*2	219.1*60.3 8.625*2.375	2.07 300	90/85	155
200*65 8*2½	219.1*73/76 8.625*2.875/3	2.07 300	90	155
200*80 8*3	219.1*88.9 8.625*3.5	2.07 300	100	165
200*100 8*4	219.1*114.3 8.625*4.5	2.07 300	110	155
200*125 8*5	219.1*139.7/141 8.625*5.5/5.563	2.07 300	130	175
200*150 8*6	219.1*165.1/168 8.625*6.5/6.625	2.07 300	140	155
250*50 10*2	273*60.3 10.75*2.375	2.07 300	95	195
250*65 10*2½	273*73/76 10.75*2.875/3	2.07 300	90	197
250*80 10*3	273*88.9 10.75*3.5	2.07 300	100	197
250*100 10*4	273*114.3 10.75*4.5	2.07 300	125	210
250*125 10*5	273*139.7/141.3 10.75*5.5/5.563	2.07 300	140	210
250*150 10*6	273*165.1/168 10.75*6.5/6.625	2.07 300	155	210
250*200 10*8	273*219.1 10.75*8.625	2.07 300	190	210
300*100 12*4	323.9*114.3 12.75*4.5	2.07 300	125	230
300*125 12*5	323.9*139.7/141 12.75*5.5/5.563	2.07 300	140	220
300*150 12*6	323.9*165.1/168.3 12.75*6.5/6.625	2.07 300	155	230
300*200 12*8	323.9*219.1 12.75*8.625	2.07 300	190	235
300*250 12*10	323.9*273 12.75*10.75	2.07 300	220	235

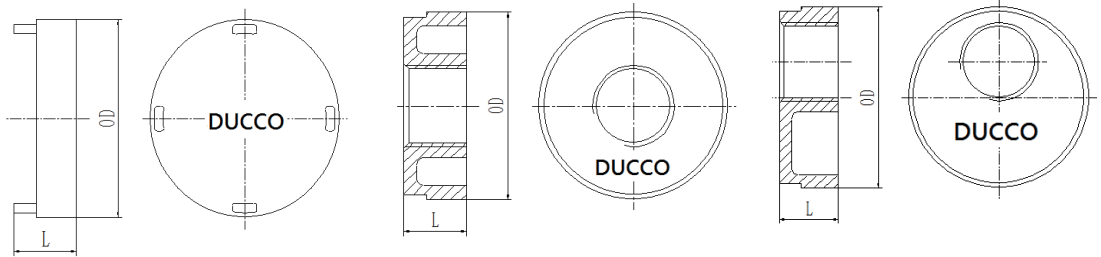


618SR

End Cap



Nominal Size mm/in	Pipe O.D mm/in	Working Pressure MPa/psi	Dimensions mm/in
			L
25~80 1~3	33.7~88.9 1.327~3.5	2.07 300	25
100~150 4~6	114.3~165/168 4.5~6.5/6.625	2.07 300	28
200~300 8~12	216.3/219.1~318.5/323.9 8.516/8.625~12.539/12.75	2.07 300	32



618

618H

618EH

618H/618EH

End Cap with
Concentric/
Eccentric Hole

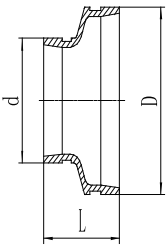


Nominal Size mm/in	Pipe O.D mm/in	Working Pressure MPa/psi	Dimensions mm/in
			L
50*25~40 2*1	60.3*33.7~48.3 2.375*1.327~1.9	2.07 300	25
65*25~50 2½*1~2	73/76.1*33.7~60.3 2.875/3*1.327~2.375	2.07 300	25
80*25~50 3*1~2	88.9*33.7~60.3 3.5*1.315~2.375	2.07 300	25
100*25~50 4*1~2	114.3*33.7~60.3 4.5*1.327~2.375	2.07 300	28
125*25~50 5*1~2	139.7/141.3*33.7~60.3 5.5*1.327~2.375	2.07 300	28
150*25~50 6*1~2	165.1/168.3*33.7~60.3 6.5/6.625*1.327~2.375	2.07 300	28
200*25~50 8*1~2	219.1*33.7~60.3 8.625*1.327~2.375	2.07 300	32
250*25~50 10*1~2	273*33.7~60.3 10.75*1.327~2.375	2.07 300	34
300*25~50 12*1~2	323.9*33.7~60.3 12.75*1.327~2.375	2.07 300	34



623/623SR

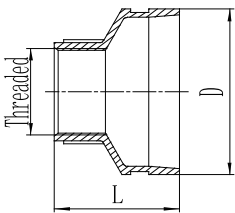
Grooved Concentric Reducer



Nominal Size mm/in	Pipe O.D mm/in	Working Pressure MPa/psi	Dimensions mm/in	
			L	
			623SR	623
32*25 1¼*1	42.4*33.7 1.66*1.327	2.07 300	64	
40*25~32 1½*1~1¼	48.3*33.7~42.4 1.9*1.327~1.669	2.07 300	64	
40*32 1½*1 ¼	48.3*42.4 1.9*1.669	2.07 300	64	
50*25~40 2*1~1½	60.3*33.7~48.3 2.375*1.327~1.9	2.07 300	58	64
65*25~40 2½*1 ~ 1½	73/76*33.7~48.3 2.875/3*1.327~1.9	2.07 300	60	64
65*50 2½*2	73/76*60.3 2.875/3*2.375	2.07 300	58	64
80*25 ~ 65 3*1~2½	88.9*33.7~73/76 3.5*1.327~2.875/3	2.07 300	60	64
100*25~80 4*1~3	114.3*33.7~88.9 4.5*1.327~3.5	2.07 300	65	76
125*25~100 5*1~4	139/141*33.7~114.3 5.5/5.563*1.327~4.5	2.07 300	70	89
150*25~125 6*1~4	165.1/168.3*33.7~114.3 6.5/6.625*1.327~4.5	2.07 300	75	102
150*125 6*5	165.1/168.3*139.7/141.3 6.5/6.625*5.5/5.563	2.07 300	65	102
200*50~150 8*2~6	216/219.1*60.3~165/168 8.516/8.625*2.375~6.25/6.5	2.07 300	85	127
250*100~150 10*4~6	267/273*114.3~165/168 10.528/10.75*4.252~6.25/6.5	2.07 300	90	152
250*200 10*8	267/273*216/219 10.528/10.75*8.516/8.625	2.07 300	85	152
300*100~250 12*4~10	318/323.9*114.3~10.528/10.75 12.539/12.75*4.5~10.528/10.75	2.07 300	90	178

624/624SR

Threaded Concentric Reducer

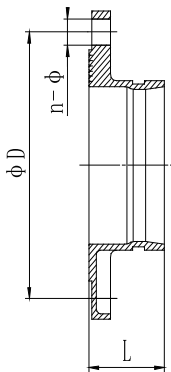


Nominal Size mm/in	Pipe O.D mm/in	Working Pressure MPa/psi	Dimensions mm/in	
			L	
			624SR	624
32*25 1¼*1	42.4*33.7 1.66*1.327	2.07 300	64	
40*25~32 1½*1~1¼	48.3*33.7~42.4 1.9*1.327~1.669	2.07 300	64	
40*32 1½*1 ¼	48.3*42.4 1.9*1.669	2.07 300	64	
50*25~40 2*1~1½	60.3*33.7~48.3 2.375*1.327~1.9	2.07 300	58	64
65*25~40 2½*1 ~ 1½	73/76*33.7~48.3 2.875/3*1.327~1.9	2.07 300	55	64
65*50 2½*2	73/76*60.3 2.875/3*2.375	2.07 300	55	64
80*25 ~ 65 3*1~2½	88.9*33.7~73/76 3.5*1.327~2.875/3	2.07 300	60	64
100*25~80 4*1~3	114.3*33.7~88.9 4.5*1.327~3.5	2.07 300	65	76
125*25~100 5*1~4	139/141*33.7~114.3 5.5/5.563*1.327~4.5	2.07 300	70	89
150*25~125 6*1~4	165.1/168.3*33.7~114.3 6.5/6.625*1.327~4.5	2.07 300	75	102
200*50~100 8*2~4	216/219.1*60.3~114.3 8.516/8.625*2.375~4.5	2.07 300	85	127



426

Grooved Flange Adaptor

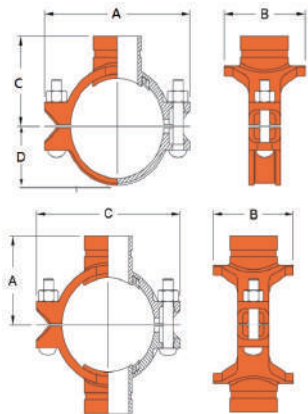


Nominal Size mm/in	Pipe O.D mm/in	Dimension mm/in	PN10		PN16		PN25		ANSI 150		10K		20K		BS	
			L	D	Bolt Size	D	Bolt Size	D	Bolt Size	D	Bolt Size	D	Bolt Size	D	Bolt Size	
25 1	33.7 1.327	60	85	4-M12	85	4-M12	85	4-M12	79.5	4-1/2						
32 1¼	42.4 1.66	60	100	4-M16	100	4-M16	100	4-M16	89	4-1/2						
40 1½	48.3 1.9	60	110	4-M16	110	4-M16	110	4-M16	98.5	4-1/2	105	4-5/8	105	4-5/8		
50 2	60.3 2.375	65	125	4-M16	125	4-M16	125	4-M16	120.5	4-5/8	120	4-5/8	120	8-5/8		
65 2½	73 2.875	60	145	4-M16	145	4-M16	145	8-M16	139.5	4-5/8						
65 2½	76.1 3	65	145	4-M16	145	4-M16	145	8-M16	139.5	4-5/8	140	4-5/8	140	8-5/8	127	4-M16
80 3	88.9 3.5	65	160	8-M16	160	8-M16	160	8-M16	152.5	8-5/8	150	8-5/8	160	8-3/4	146	4-M16
100 4	108 4.252	65	180	8-M16	180	8-M16	190	8-M20								
100 4	114.3 4.5	70	180	8-M16	180	8-M16	190	8-M20	190.5	8-5/8	175	8-5/8	185	8-3/4	178	8-M16
125 5	133 5.25	70	210	8-M16	210	8-M16	220	8-M24								
125 5	139.7 5.5	70	210	8-M16	210	8-M16	220	8-M24	216	8-3/4	210	8-3/4	225	8-7/8	210	8-M16
125 5	141.3 5.563	70	210	8-M16	210	8-M16			216	8-3/4						
150 6	159 6.26	70	240	8-M20	240	8-M20	250	8-M24								
150 6	165.1 6.5	70	240	8-M20	240	8-M20	250	8-M24	241.5	8-3/4	240	8-3/4	260	12-7/8	235	8-M20
150 6	168.3 6.625	70	240	8-M20	240	8-M20			241.5	8-3/4						
200 8	216.3 8.516	80									290	12-3/4	305	12-7/8		
200 8	219.1 8.625	80	295	8-M20	295	12-M20	310	12-M24	298.5	8-3/4					292	8-M20
250 10	267.4 10.528	85									355	12-7/8	380	12-1		
250 10	273 10.75	85	350	12-M20	355	12-M20			362	12-7/8					356	12-M20
300 12	318.5 12.539	90									400	12-7/8	430	16-1		
300 12	323.9 12.75	90	400	12-M20	410	12-M20			432	12-7/8					406	12-M22



413A/413AC

Grooved Outlet
Mechanical Tee

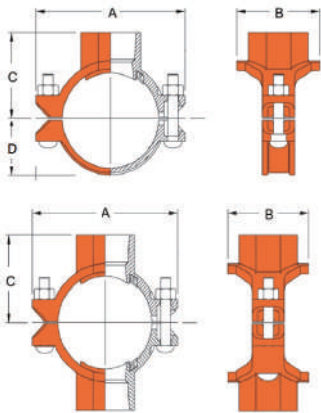


Nominal Size mm/in	Pipe O.D mm/in	Working Pressure MPa/psi	Dimensions mm/in				Hole Dia mm/in	Bolt/Nut
			A	B	C	D		
80*50 3*2	88.9*60.3 3.5*2.375	2.07 300	144	98	85	55	64	2-3/8**60
80*65 3*2½	88.9*73 3.5*2.875	2.07 300	146	100	85	55	70	2-3/8**60
80*65 3*2½	88.9*76.1 3.5*3	2.07 300	144	98	85	55	70	2-3/8**60
100*50 4*2	114.3*60.3 4.5*2.375	2.07 300	178	95	98	68	64	2-1/2**65
100*65 4*2½	114.3*73/76 4.5*2.875/3	2.07 300	178	114	98	68	70	2-1/2**65
100*80 4*3	114.3*88.9 4.5*3.5	2.07 300	178	126	98	68	92	2-1/2**65
125*50 5*2	139.7/141.3*60.3 5.5/5.563*2.375	2.07 300	206	95	109	81	64	2-1/2**70
125*65 5*2½	139.7/141.3*73/76 5.5/5.563*2.875/3	2.07 300	206	114	109	81	70	2-1/2**70
125*80 5*3	139.7/141.3*88.9 5.5/5.563*3.5	2.07 300	206	128	109	81	92	2-1/2**70
150*50 6*2	165.1/168.3*60.3 6.5/6.625*2.375	2.07 300	242	95	121	93	64	2-M14*75
150*65 6*2½	165.1/168.3*73/76 6.5/6.625*2.875/3	2.07 300	242	115	121	93	70	2-M14*75
150*80 6*3	165.1/168.3*88.9 6.5/6.625*3.5	2.07 300	242	128	124	93	92	2-M14*75
150*100 6*4	165.1/168.3*114.3 6.5/6.625*4.5	2.07 300	242	158	121	93	114	2-M14*75
200*50 8*2	216*60 8.516*2.375	2.07 300	294	98	150	120	64	2-5/8**90
200*65 8*2 ½	216*76 8.516*3	2.07 300	294	115	150	120	80	2-5/8**90
200*80 8*3	216*89 8.516*3.5	2.07 300	294	128	150	120	92	2-5/8**90
200*100 8*4	216*114 8.516*4.5	2.07 300	294	156	151	120	114	2-5/8**90
200*50 8*2	219*60.3 8.625*2.375	2.07 300	298	95	152	122	64	2-5/8**90
200*65 8*2½	219*73 8.625*2.875	2.07 300	298	115	152	122	70	2-5/8**90
200*65 8*2½	219*76.1 8.265*3	2.07 300	298	115	152	122	70	2-5/8**90
200*80 8*3	219*88.9 8.625*3.5	2.07 300	298	128	152	122	92	2-5/8**90
200*100 8*4	219*114.3 8.625*4.5	2.07 300	298	158	152	122	114	2-5/8**90



413B/413BC

Threaded Outlet
Mechanical Tee

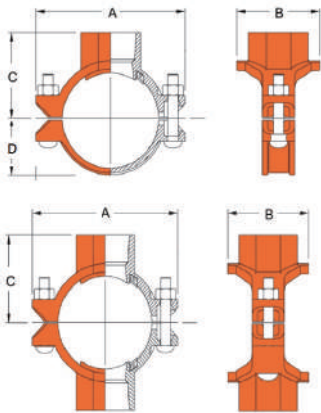


Nominal Size mm/in	Pipe O.D mm/in	Working Pressure MPa/psi	Dimensions mm/in				Hole Dia mm/in	Bolt/Nut
			A	B	C	D		
50*25 2*1	60.3*33.7 2.375*1.327	2.07 300	118	73	49	38	38	2-3/8**50
50*32 2*1¼	60.3*42.4 2.375*1.669	2.07 300	118	73	52	38	46	2-3/8**50
50*40 2*1½	60.3*48.3 2.375*1.9	2.07 300	118	73	62	38	44	2-3/8**50
65*15 2½*½	73/76*21.3 2.875/3*0.84	2.07 300	134	56	57	44	30	2-3/8**60
65*20 2½*¾	73/76*26.7 2.875/3*1.05	2.07 300	134	56	57	44	30	2-3/8**60
65*25 2½*1	73/76*33.7 2.875/3*1.327	2.07 300	134	72	57	44	38	2-3/8**60
65*32 2½*1¼	73/76*42.4 2.875/3*1.669	2.07 300	134	82	58	44	46	2-3/8**60
65*40 2½*1½	73/76*48.3 2.875/3*1.9	2.07 300	134	84	58	44	51	2-3/8**60
65*50 2½*2	73/76*60.3 2.875/3*2.375	2.07 300	134	84	74	44	51	2-3/8**60
80*15 3*½	88.9*21.3 3.5*0.84	2.07 300	144	70	68	55	38	2-3/8**60
80*20 3*¾	89*26.7 3.5*1.05	2.07 300	144	70	68	55	38	2-3/8**60
80*25 3*1	88.9*33.7 3.5*1.327	2.07 300	144	70	66	55	38	2-3/8**60
80*32 3*1¼	88.9*42.4 3.5*1.669	2.07 300	144	83	67	55	46	2-3/8**60
80*40 3*1½	88.9*48.3 3.5*1.9	2.07 300	144	85	67	55	51	2-3/8**60
80*50 3*2	88.9*60.3 3.5*2.375	2.07 300	144	98	69	55	64	2-3/8**60
80*65 3*2½	88.9*73 3.5*2.875	2.07 300	146	100	87	55	70	2-3/8**60
80*65 3*2½	88.9*76.1 3.5*3	2.07 300	144	98	87	55	64	2-3/8**60
100*15 4*½	114.3*21.3 4.5*0.84	2.07 300	178	72	80	68	38	2-1/2**65
100*20 4*¾	117.3*26.7 4.5*1.05	2.07 300	178	72	80	68	38	2-1/2**65
100*25 4*1	114.3*33.7 4.5*1.327	2.07 300	178	72	80	68	38	2-1/2**65
100*32 4*1¼	114.3*42.4 4.5*1.669	2.07 300	178	83	80	68	46	2-1/2**65
100*40 4*1½	114.3*48.3 4.5*1.9	2.07 300	178	84	80	68	51	2-1/2**65
100*50 4*2	114.3*60.3 4.5*2.375	2.07 300	178	95	82	68	64	2-1/2**65
100*65 4*2½	114.3*73/76 4.5*2.875/3	2.07 300	178	114	82	68	80	2-1/2**65
100*80 4*3	114.3*88.9 4.5*3.5	2.07 300	178	126	95	68	92	2-1/2**65
125*25 5*1	139.7/141.3*33.7 5.5/5.563*1.327	2.07 300	206	72	93	81	38	2-1/2**70
125*32 5*1¼	139.7/141.3*42.4 5.5/5.563*1.669	2.07 300	206	83	93	81	46	2-1/2**70



413B/413BC

Threaded Outlet
Mechanical Tee



Nominal Size mm/in	Pipe O.D mm/in	Working Pressure MPa/psi	Dimensions mm/in				Hole Dia mm/in	Bolt/Nut
			A	B	C	D		
125*40 5*1½	139.7/141.3*48.3 5.5/5.563*1.9	2.07 300	206	85	93	81	53	2-1/2**70
125*50 5*2	139.7/141.3*60.3 5.5/5.563*2.375	2.07 300	206	95	95	81	64	2-1/2**70
125*65 5*2½	139.7/141.3*73/76 5.5/5.563*2.875/3	2.07 300	206	114	95	81	80	2-1/2**70
125*80 5*3	139.7/141.3*88.9 5.5/5.563*3.5	2.07 300	206	114	95	81	80	2-1/2**70
125*100 5*4	139.7/141.3*114.3 5.5/5.563*4.5	2.07 300	210	158	115	82	114	2-1/2**70
150*15 6*½	165.1/168*21.3 6.5/6.625*0.84	2.07 300	242	72	105	93	38	2-M14*75
150*20 6*¾	165.1/168*26.7 6.5/6.625*1.05	2.07 300	242	72	105	93	38	2-M14*75
150*25 6*1	165.1/168.3*33.7 6.5/6.625*1.327	2.07 300	242	72	105	93	38	2-M14*75
150*32 6*1¼	165.1/168.3*42.4 6.5/6.625*1.669	2.07 300	242	83	105	93	46	2-M14*75
150*40 6*1½	165.1/168.3*48.3 6.5/6.625*1.9	2.07 300	242	85	105	93	53	2-M14*75
150*50 6*2	165.1/168.3*60.3 6.5/6.625*2.375	2.07 300	242	95	108	93	64	2-M14*75
150*65 6*2½	165.1/168.3*73/76 6.5/6.625*2.875/3	2.07 300	242	115	108	93	70	2-M14*75
150*80 6*3	165.1/168.3*88.9 6.5/6.625*3.5	2.07 300	242	128	108	93	92	2-M14*75
150*100 6*4	165.1/168.3*114.3 6.5/6.625*4.5	2.07 300	242	158	112	93	114	2-M14*75
200*25 8*1	219*33.7 8.625*1.327	2.07 300	298	75	134	122	38	2-5/8*90
200*32 8*1¼	219*42.4 8.625*1.669	2.07 300	298	82	137	122	46	2-5/8*90
200*40 8*1½	219*48.3 8.625*1.9	2.07 300	298	86	137	122	53	2-5/8*90
200*50 8*2	219*60.3 8.625*2.375	2.07 300	298	98	137	122	64	2-5/8*90
200*65 8*2½	219*73 8.625*2.875	2.07 300	298	115	137	122	80	2-5/8*90
200*65 8*2½	219*76.1 8.625*3	2.07 300	298	115	137	122	80	2-5/8*90
200*80 8*3	219*88.9 8.625*3.5	2.07 300	298	128	139	122	92	2-5/8*90
200*100 8*4	219*114.3 8.625*4.5	2.07 300	298	156	154	122	114	2-5/8*90
250*50 10*2	273*60 10.75*2.375	2.07 300	372	100	168	151	64	2-3/4*110
250*65 10*2½	273*73 10.75*2.875	2.07 300	372	115	168	151	80	2-3/4*110
250*65 10*2½	273*76 10.75*3	2.07 300	372	115	168	151	80	2-3/4*110
250*65 10*3	273*89 10.75*3.5	2.07 300	372	128	169	151	92	2-3/4*110
250*65 10*4	273*114 10.75*4.5	2.07 300	372	160	182	151	114	2-3/4*110